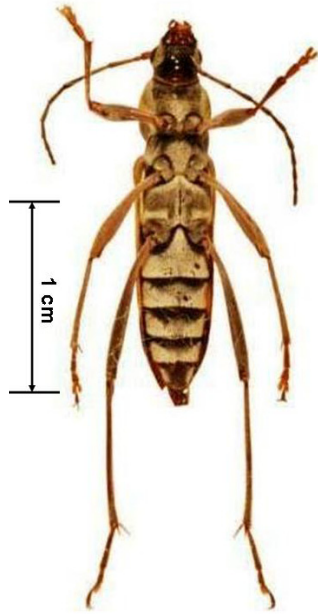


# PEST ALERT

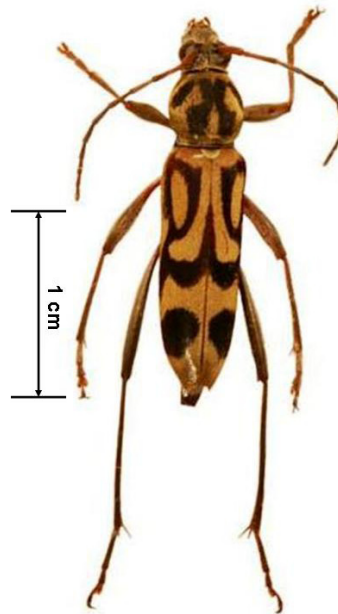
## Bamboo Longhorned Beetle

*Chlorophorus annularis* Fabricius



Ventral view

Photo: C. M. F. Pierce & M. A. McDonough



Dorsal view

Photo: C. M. F. Pierce & M. A. McDonough

**CAUTION:** The USDAAPHIS PPQ has notified plant regulatory officials in the United States that shipments of bamboo stakes coming into various ports of entry from China have contained live stages of an exotic longhorned beetle that is considered an actionable pest by the USDA and potential pest to U.S. nursery stock. This pest is *Chlorophorus annularis*.

**PATHWAY:** This pest comes from China in shipments of bamboo stakes and potentially infested nursery stock.

**DESCRIPTION: Adult:** The adult beetle is 10.0 to 15.0 mm in length and 2.2 to 4.0 mm in breadth. The body is densely clothed with yellow hairs. The wings have dark brownish or black markings.

**HOSTS:** This invasive species primarily infests bamboo, and most reports are from dried bamboo. The bamboo stakes are frequently used by the nursery and landscaping industry to hold trees upright in production and landscape areas. However, the insect has also been reported in sugarcane, citrus, pear, apple, teak, cotton, corn, and, in the Chinese literature, maple. For many of these hosts, though, it's uncertain whether reports of associations are for larval damage or simply observations of flower-feeding by adults (which is common in this genus).

**DAMAGE:** The larvae, when present, are located in the sap wood, just below the bark. Larvae are not usually found in the inner hollow area of the pole.

**CONTACT:** If you have any questions, please contact the Indiana Department of Natural Resources Invasive Species Hotline at 1-866-NO-EXOTIC (1-866-663-9684). Visit Purdue University's Entomology Extension website at: <[www.entm.purdue.edu/CAPS/](http://www.entm.purdue.edu/CAPS/)>.



Larry Bledsoe, CAPS Coordinator  
Purdue University  
Entomology Department  
An equal access/equal opportunity university.

